



CARTES

POSTALES

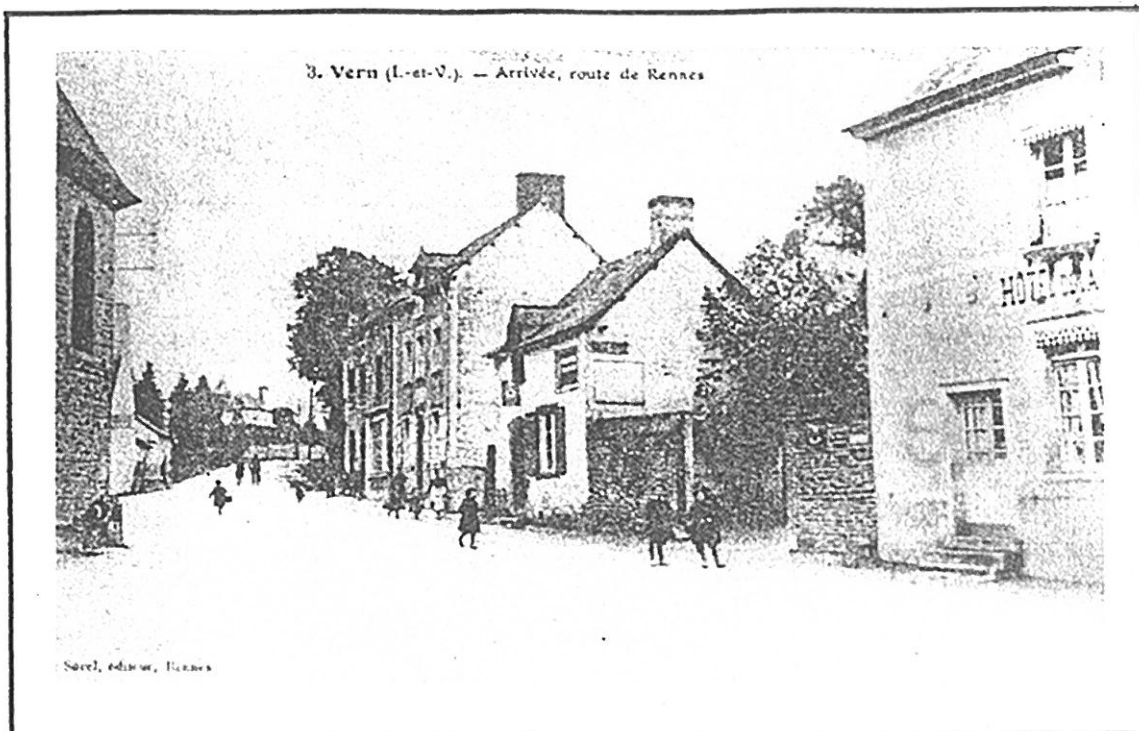
de Vern

Le bourg



ERNING-SFICHE (L.-M.V.) — Route de Corps-Nuds

Photo A. Lantier - R...



9242. Vern (1885) - La Poste de Châteaubriant



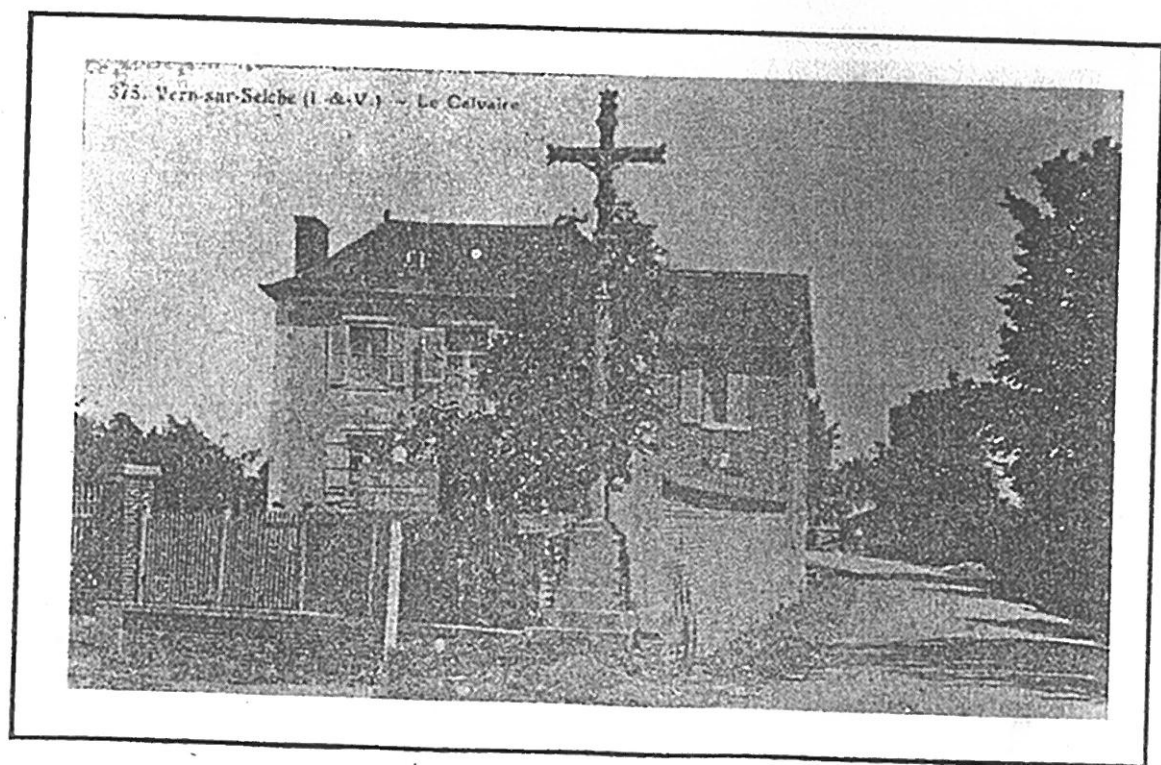
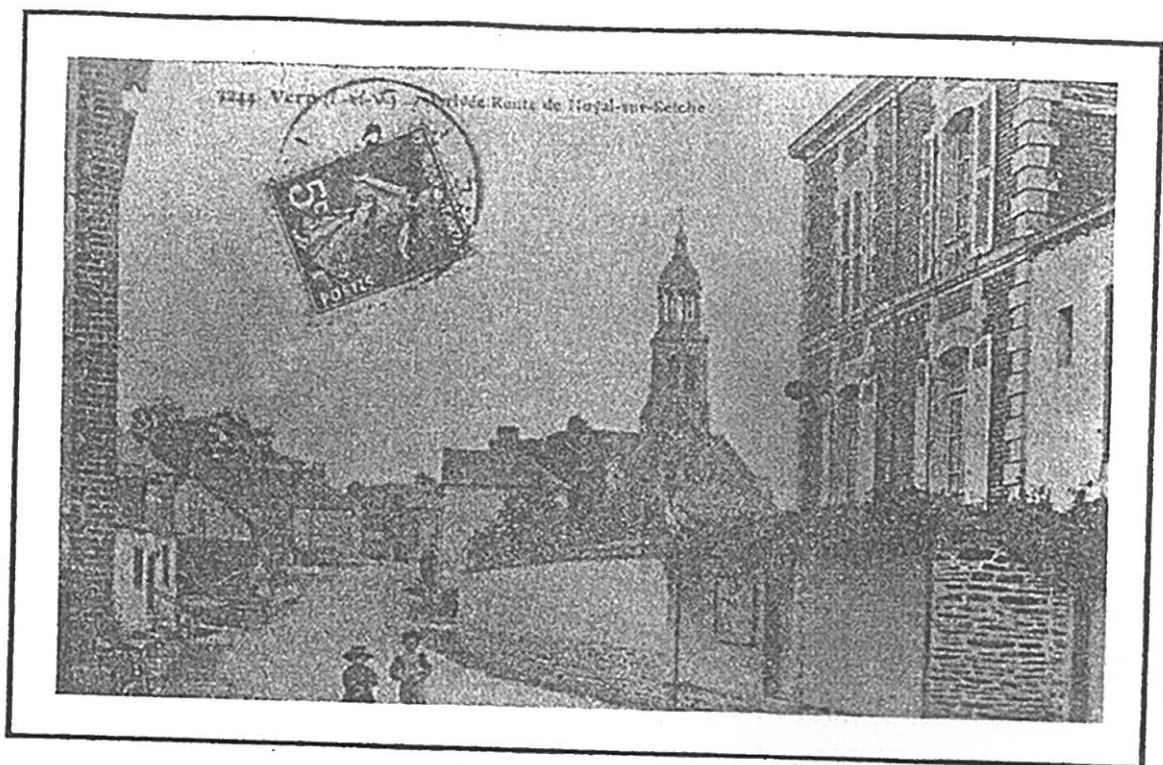
15. Vern (I.-et-V.) - La Place

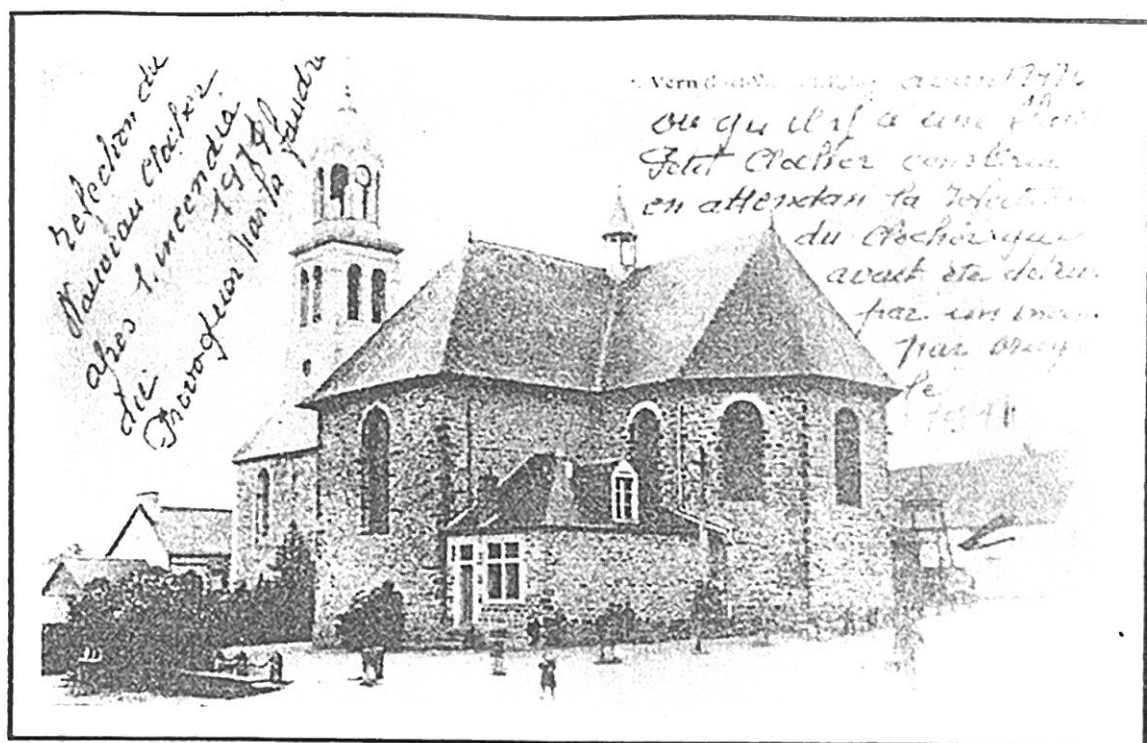


J. Siret, éditeur, Rennes

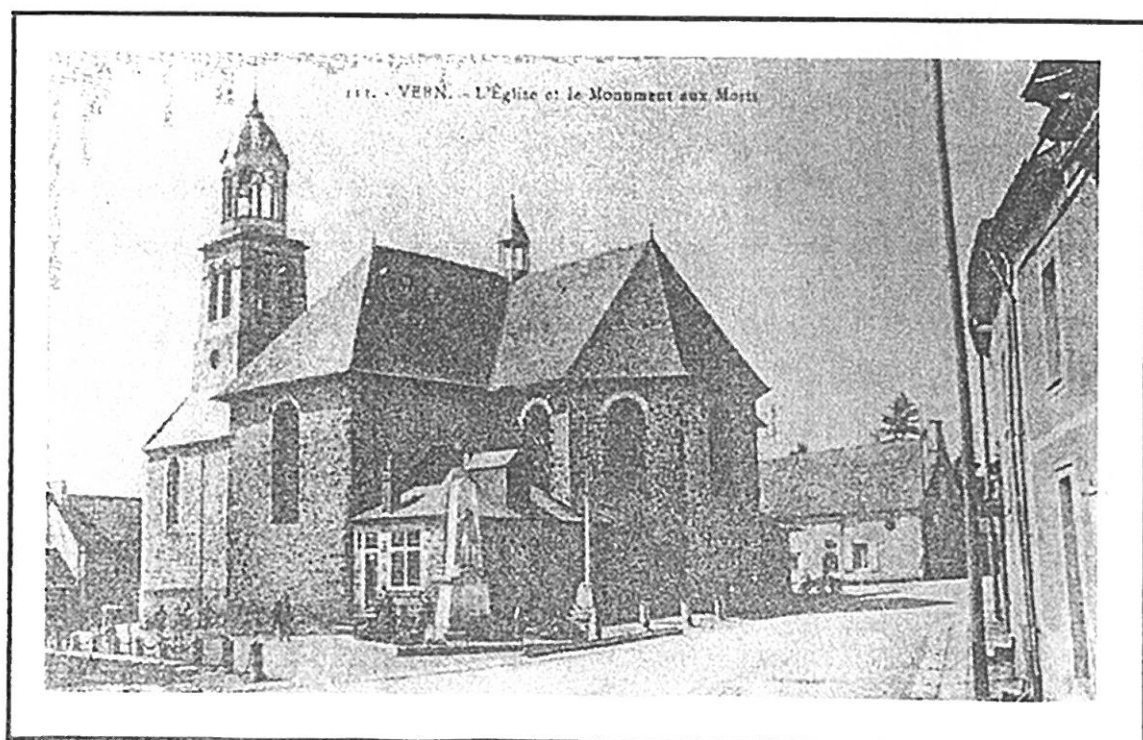
266 - Environs de Rennes - VERN - Vue générale







L'église

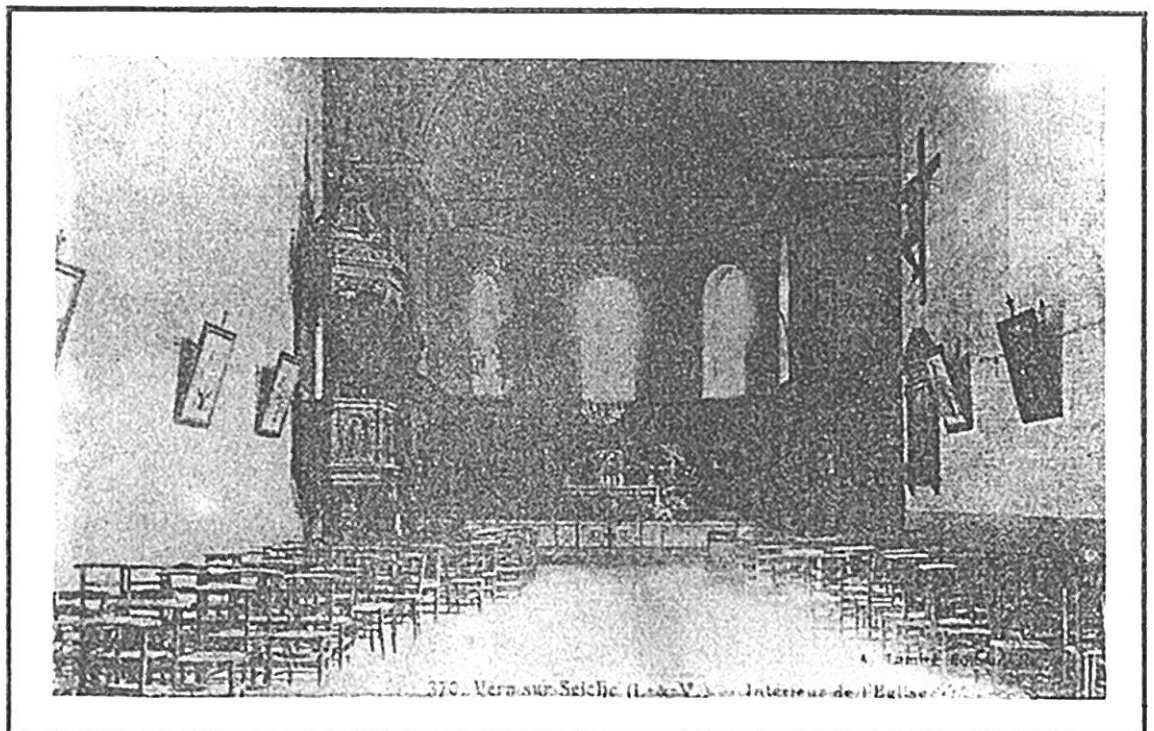
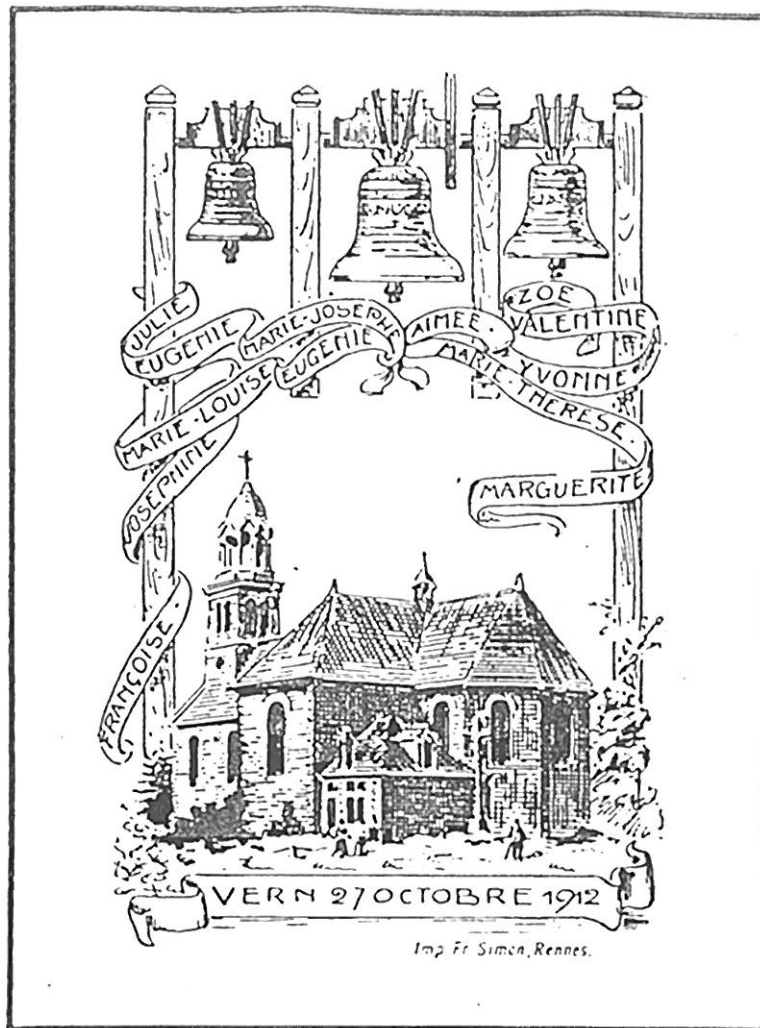


207 - Environs de Rennes - VERN - L'Eglise

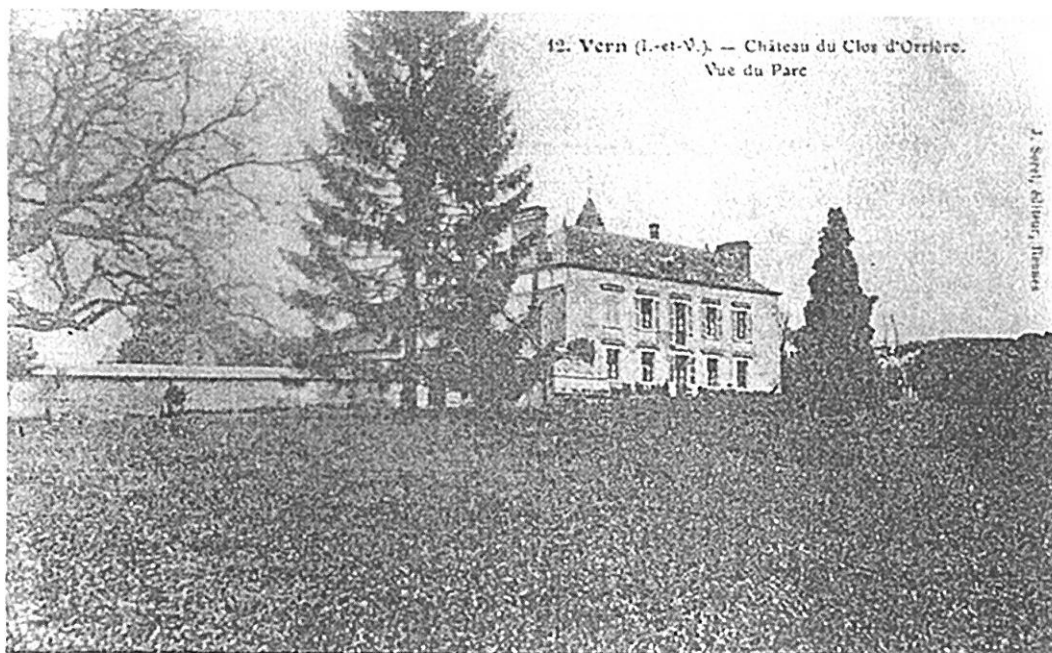


267. Vern (I.-et-V.) - L'Eglise



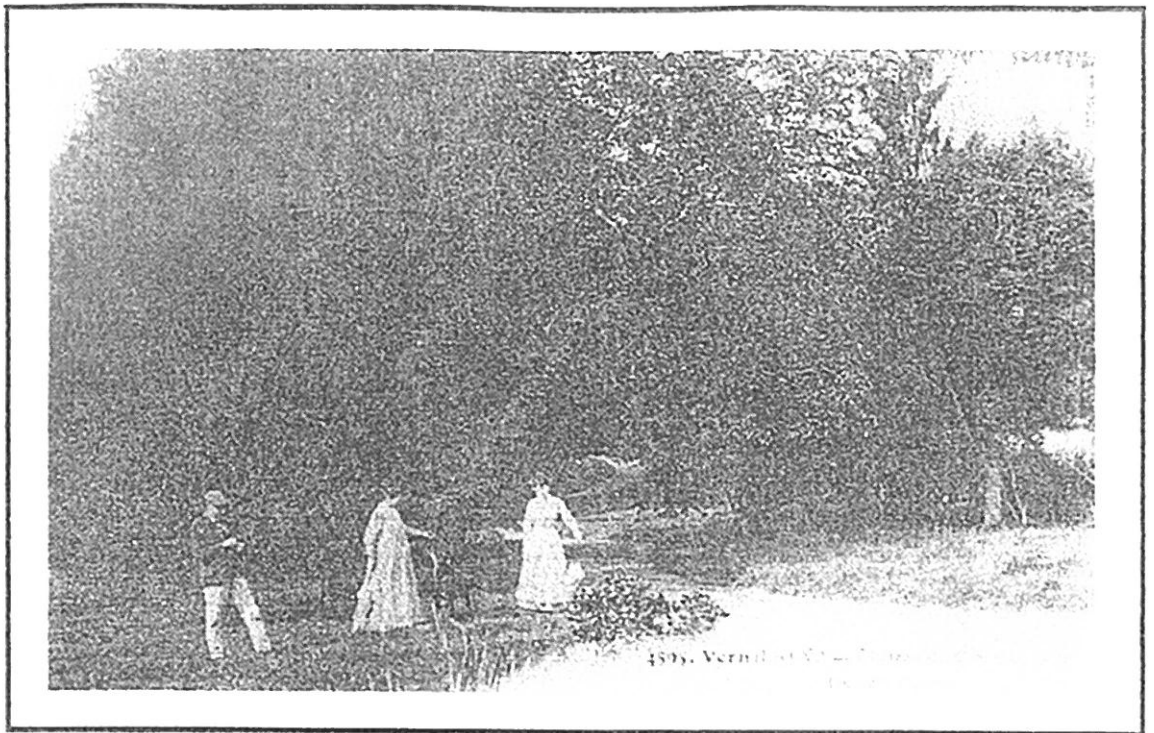


Le Clos-d'Orrière

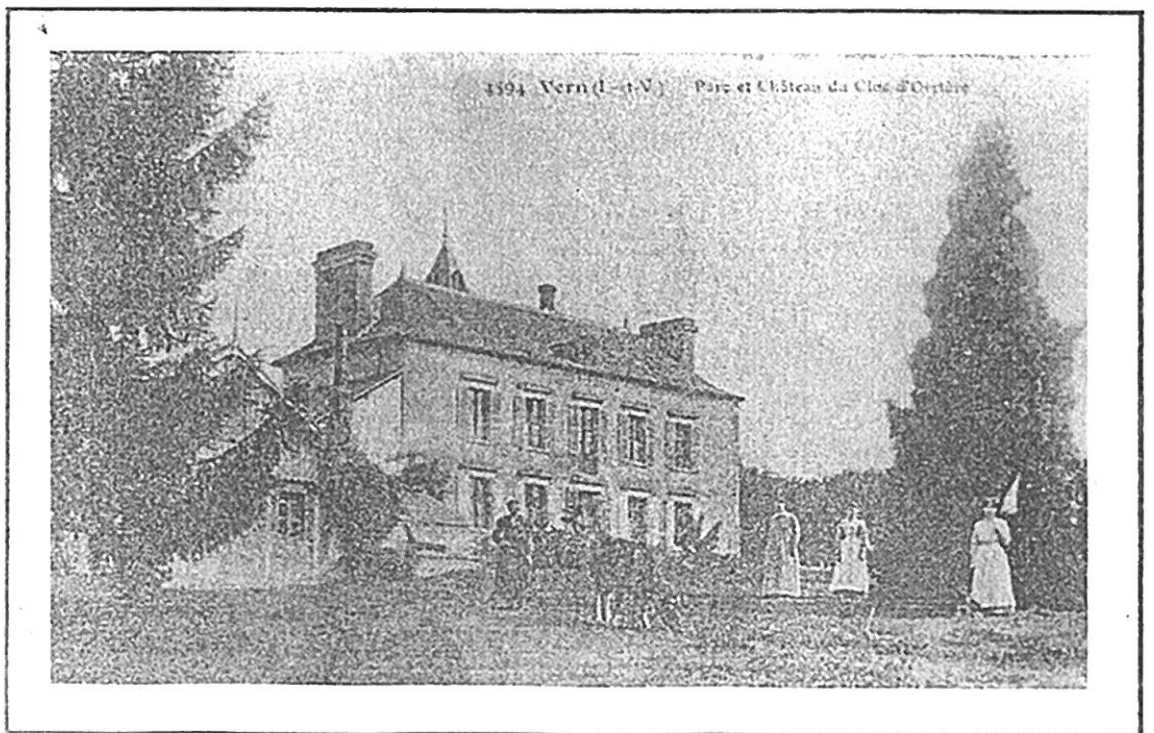


12. Vern (I.-et-V.) — Château du Clos d'Orrière.
Vue du Parc

J. Serris, Albert, France



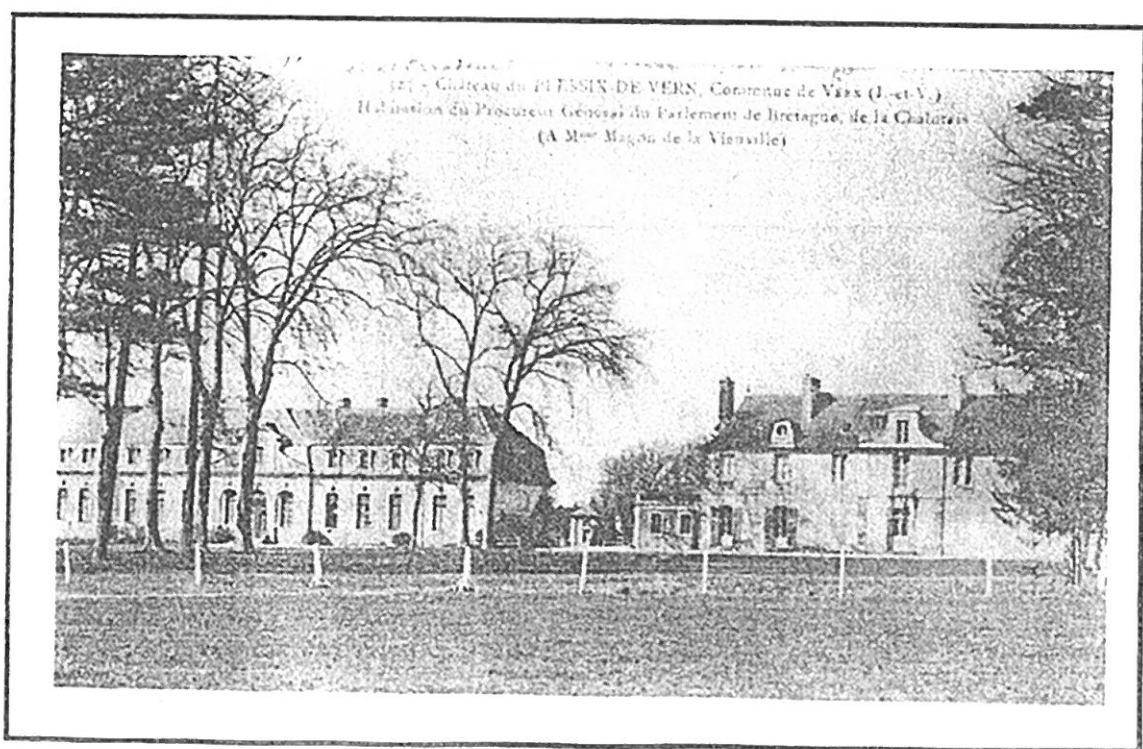
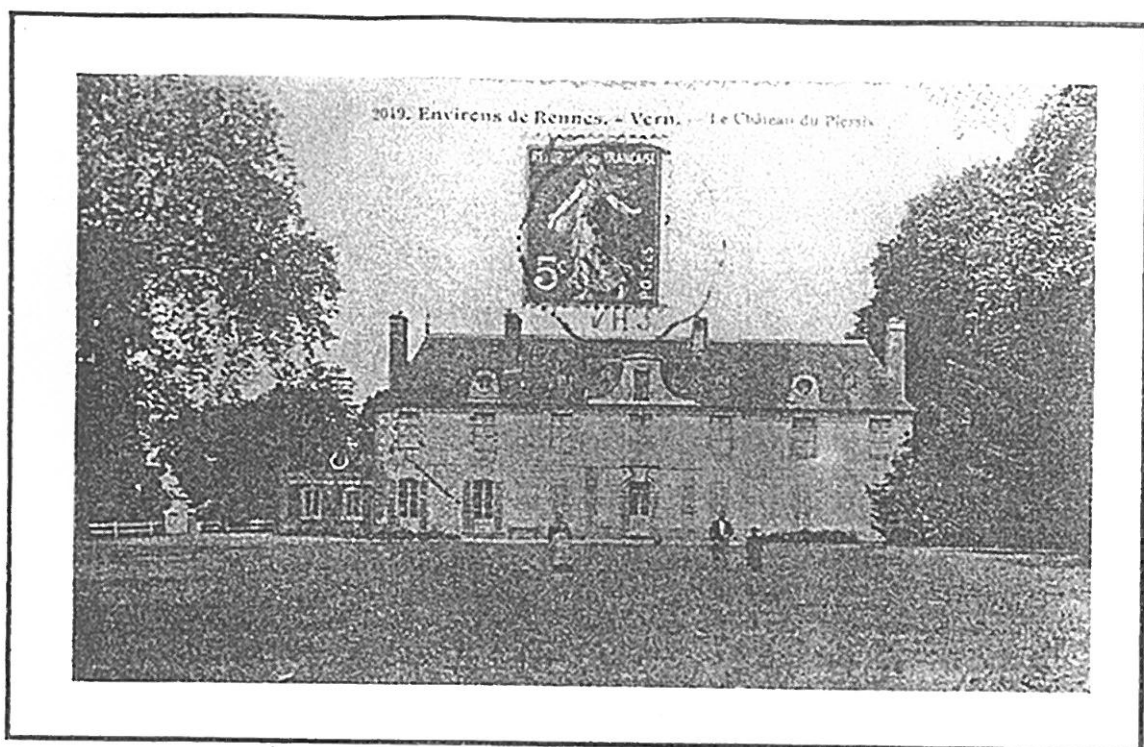
4593. Vernil (L.-N.) - Parc de la Chapelle d'Orléans



4594. Vernil (L.-N.) - Parc et Château de Clos d'Orléans

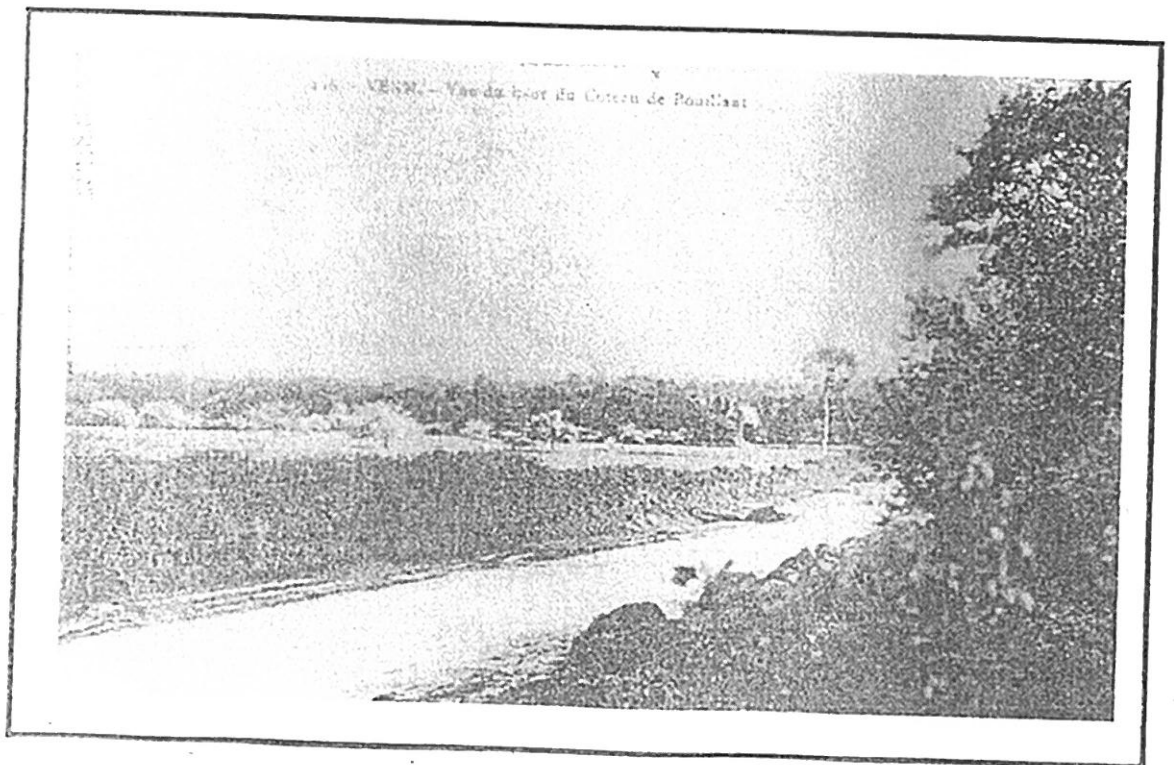
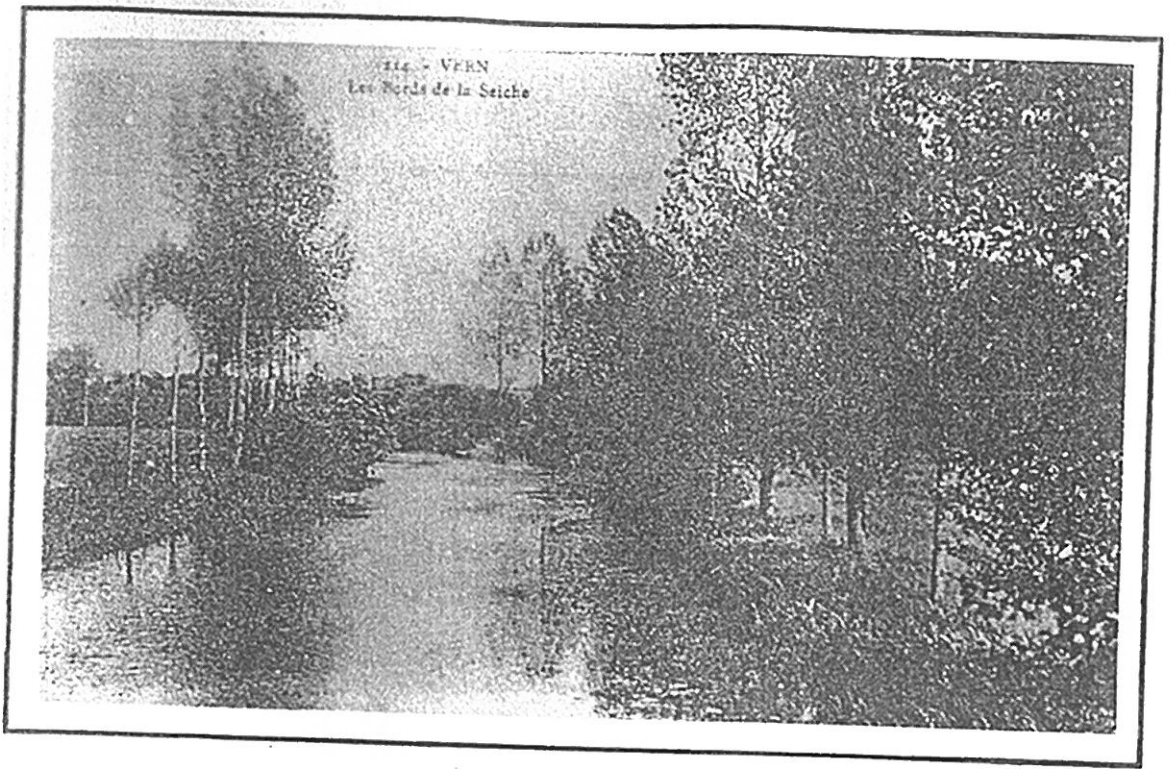
Le Plessis





La Seiche



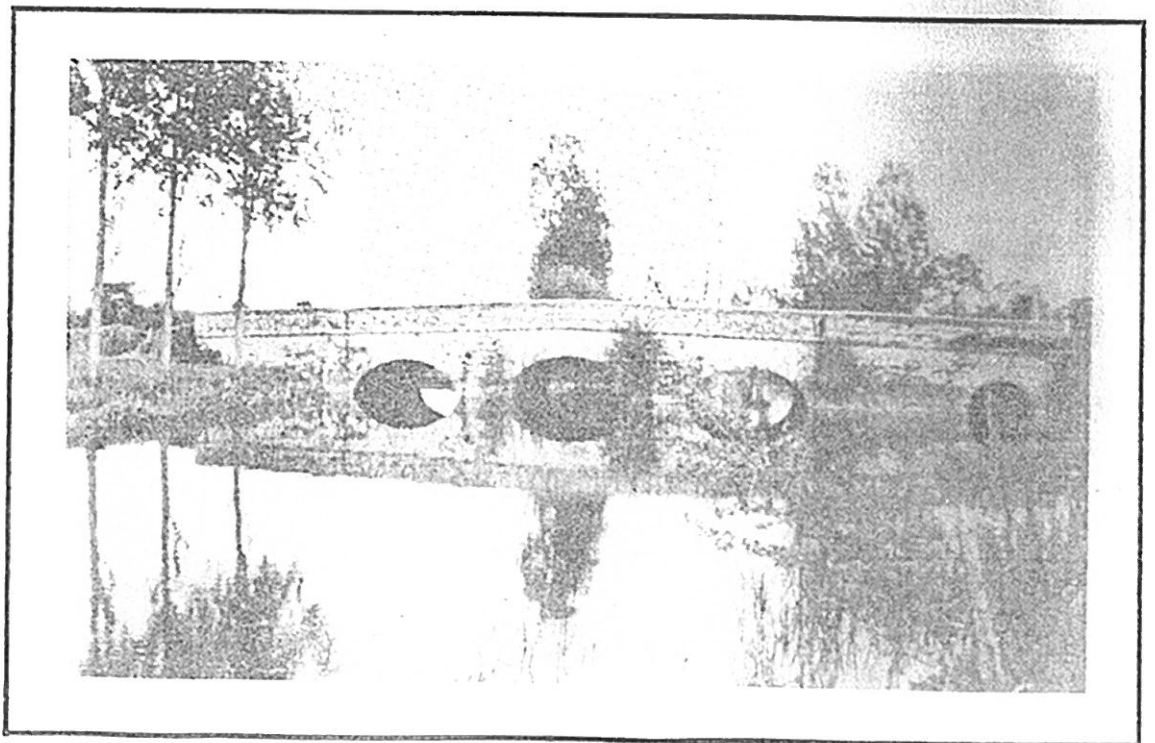
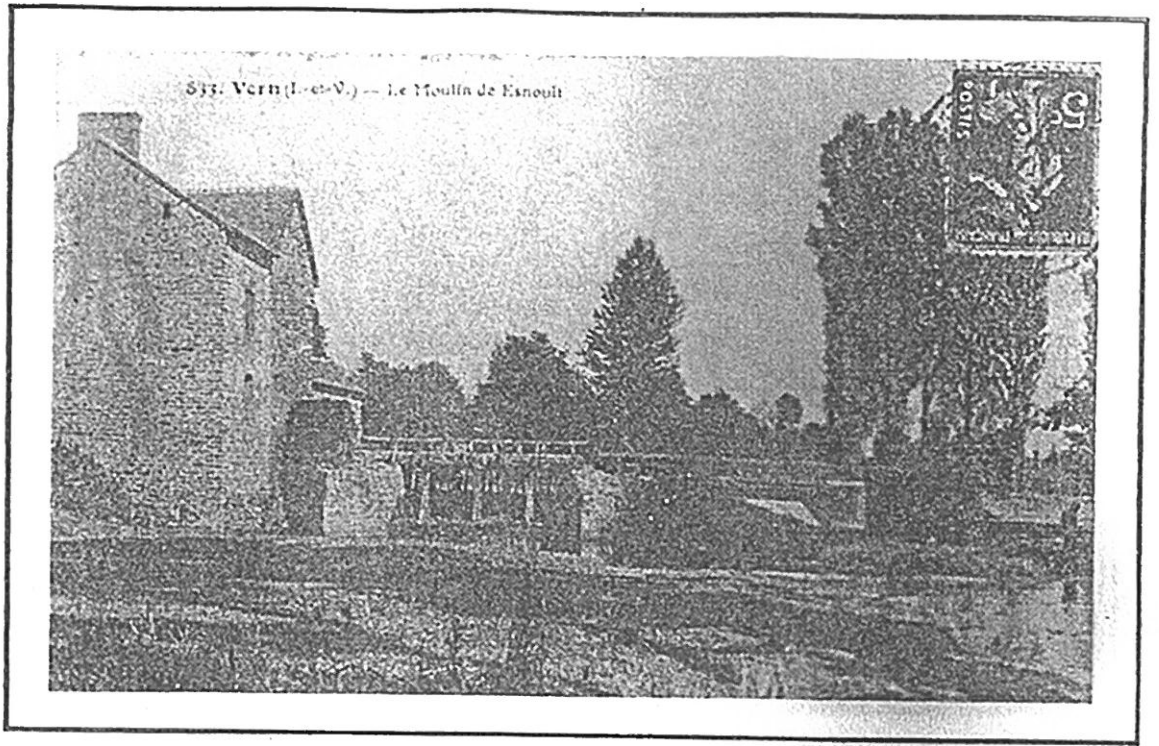


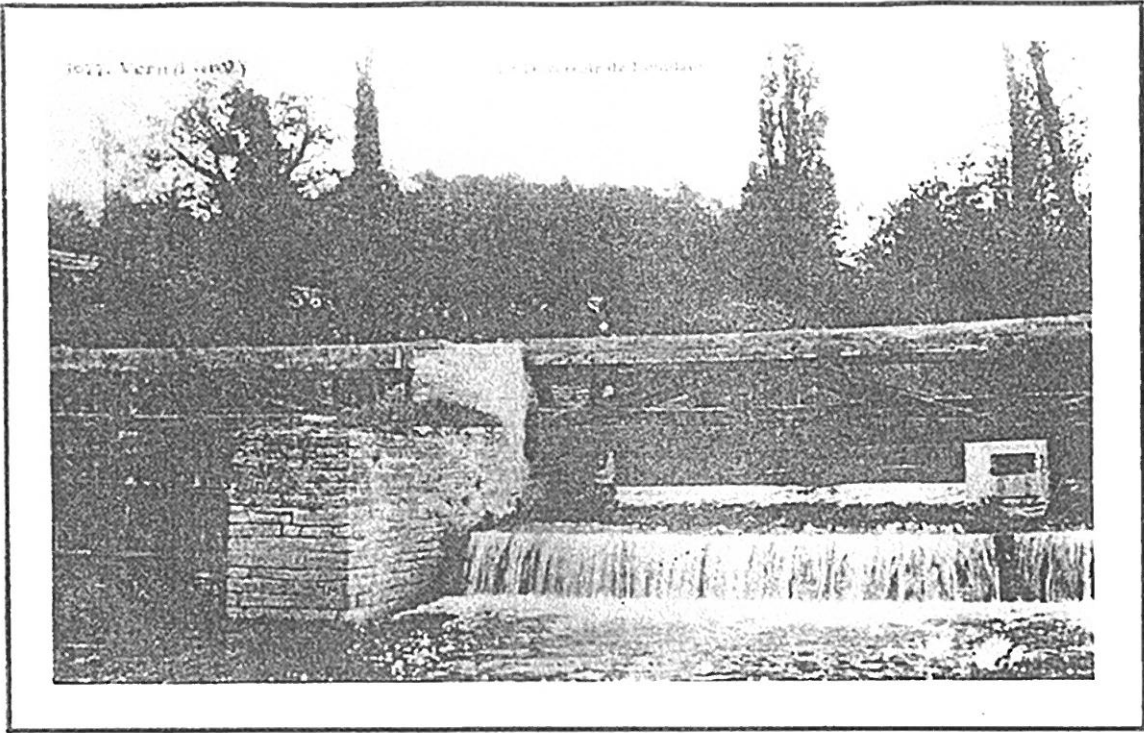
Une partie de Castel aux Saiches



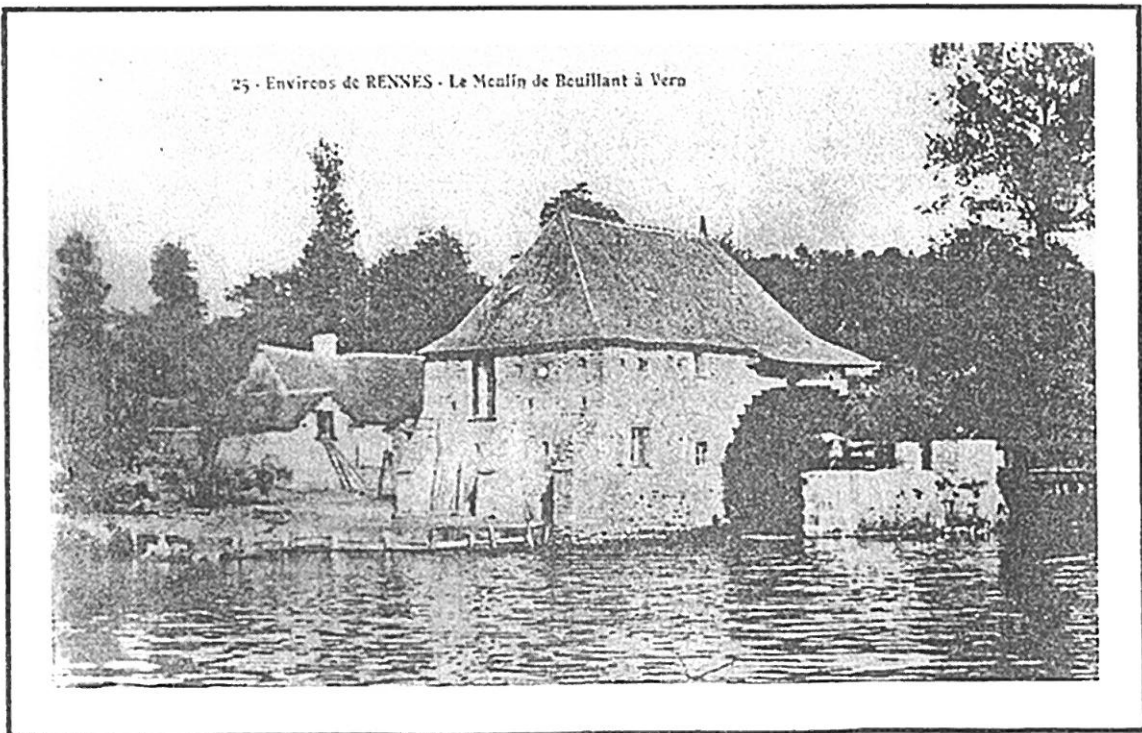
111. - VERN. - Le Pont de Vauban

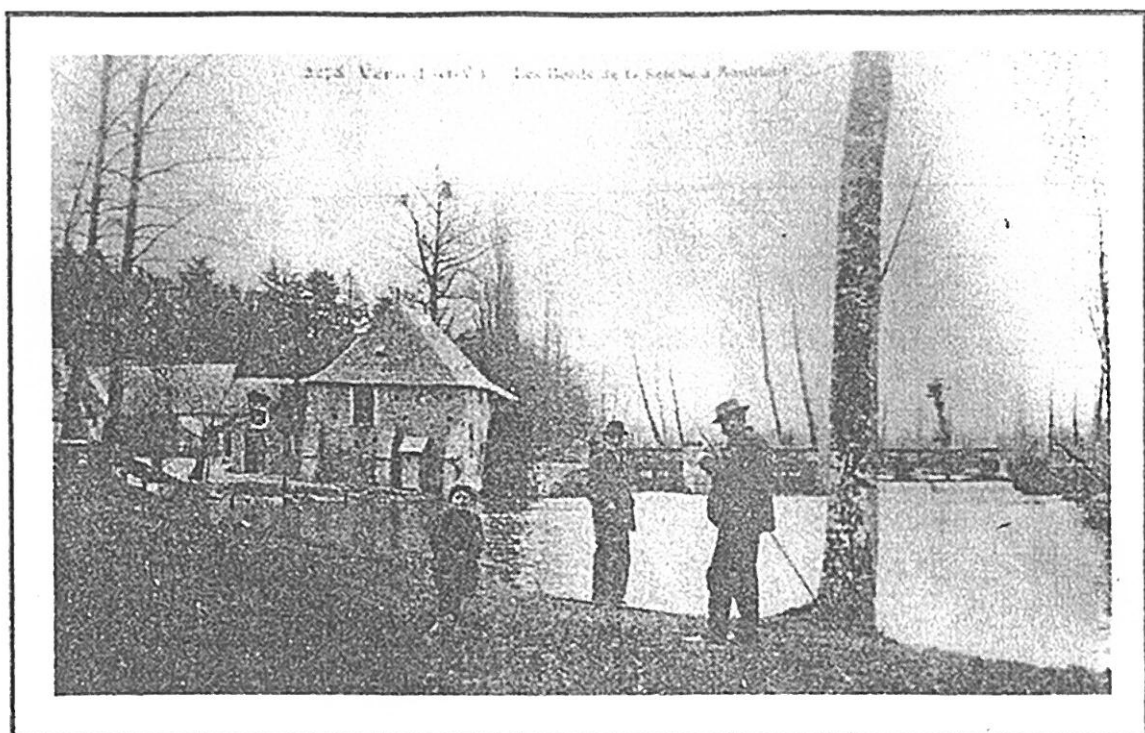




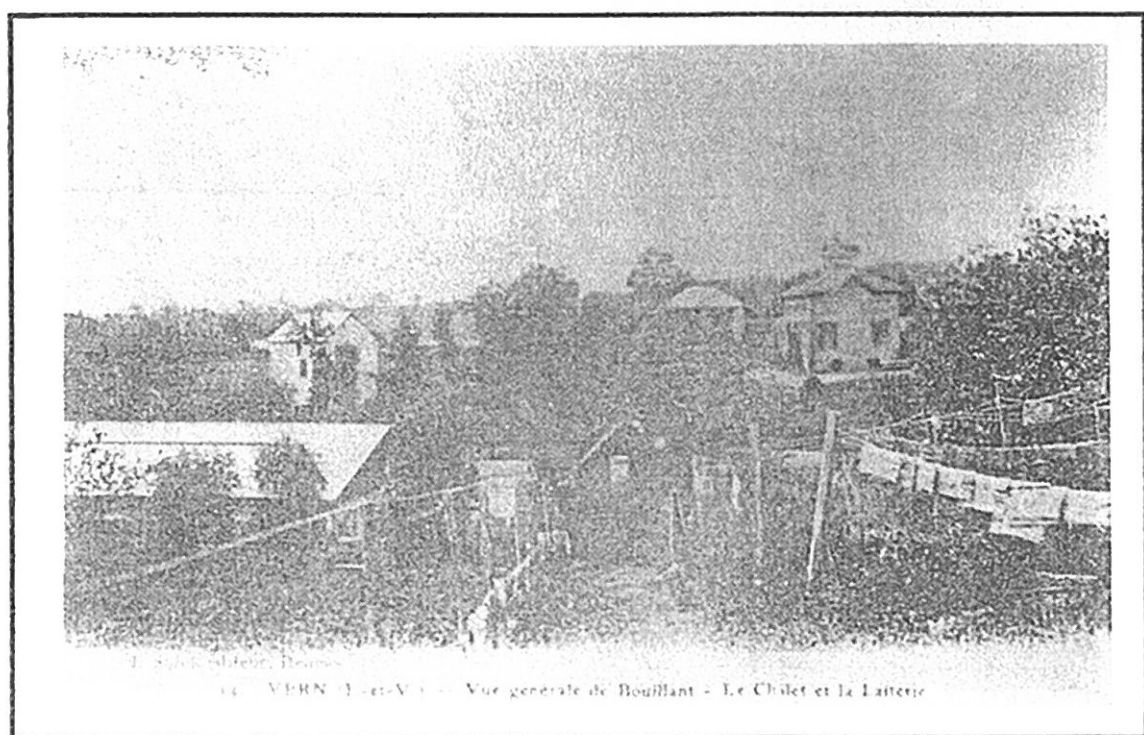


Les Bouillants

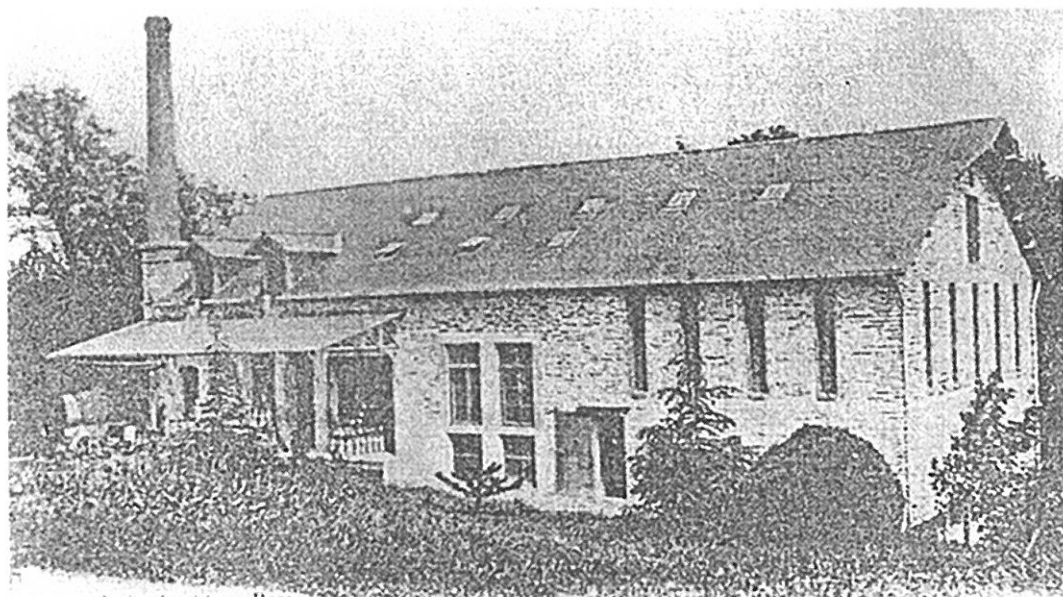
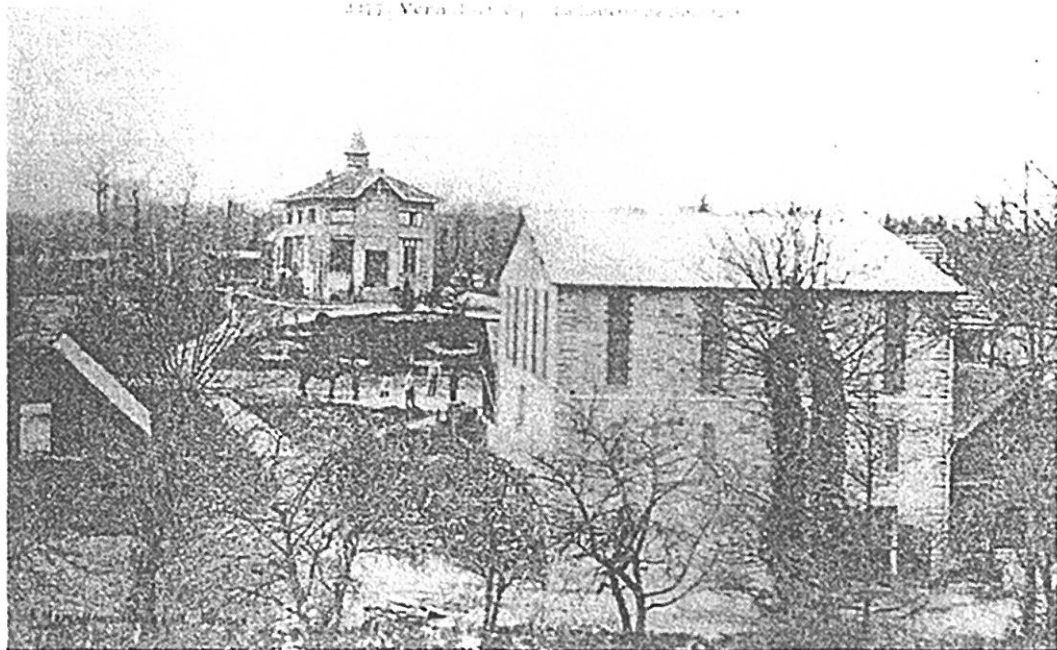




BRIDGES



417. VERN (J.-et-V.) — La Laiterie de Bouillant



2. S.-est. village, Bouillant

4. VERN (J.-et-V.) — La Laiterie et la Fromagerie de Bouillant

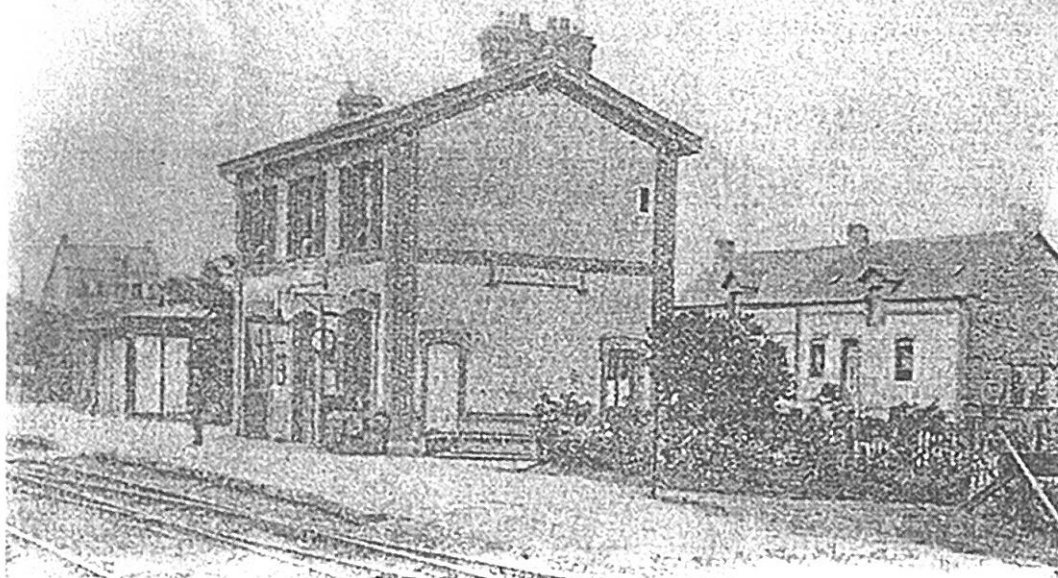
225. Vern (I.-et-V.) — Le Chalet de Bouilland



226. Vern (I.-et-V.) — Le Chalet de Bouilland



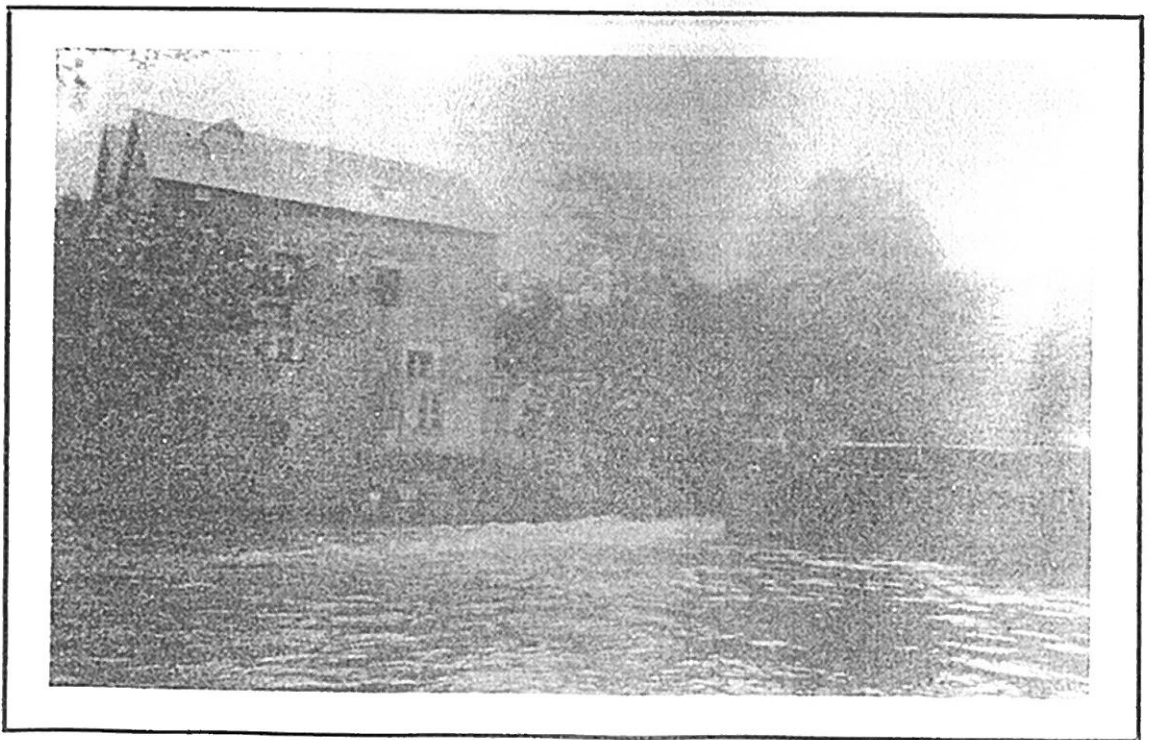
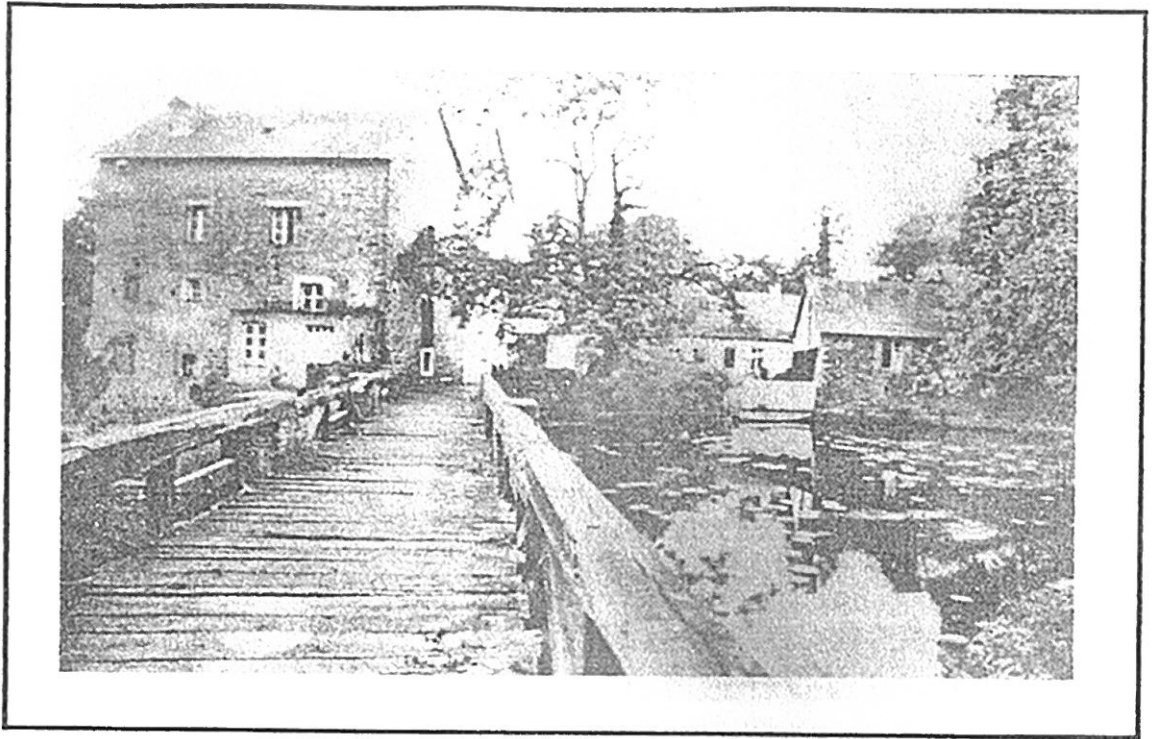
1065. Livrens de Rennes. - Vern. - La Gare

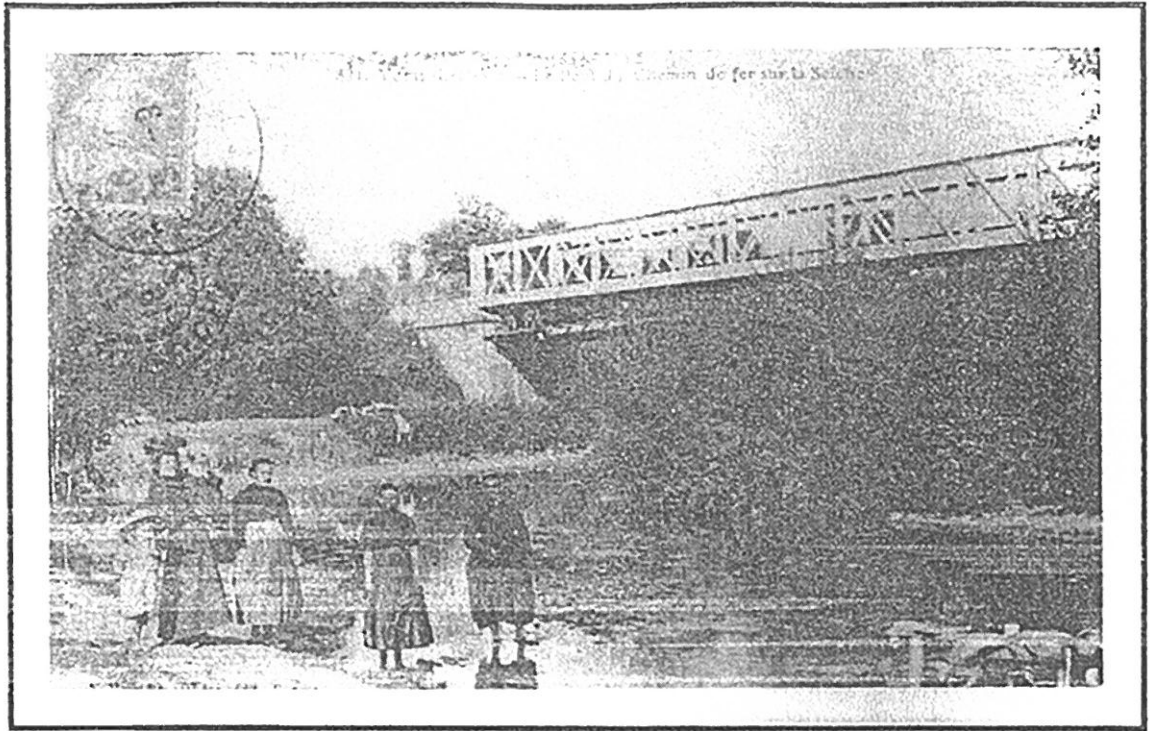


Le chemin de fer

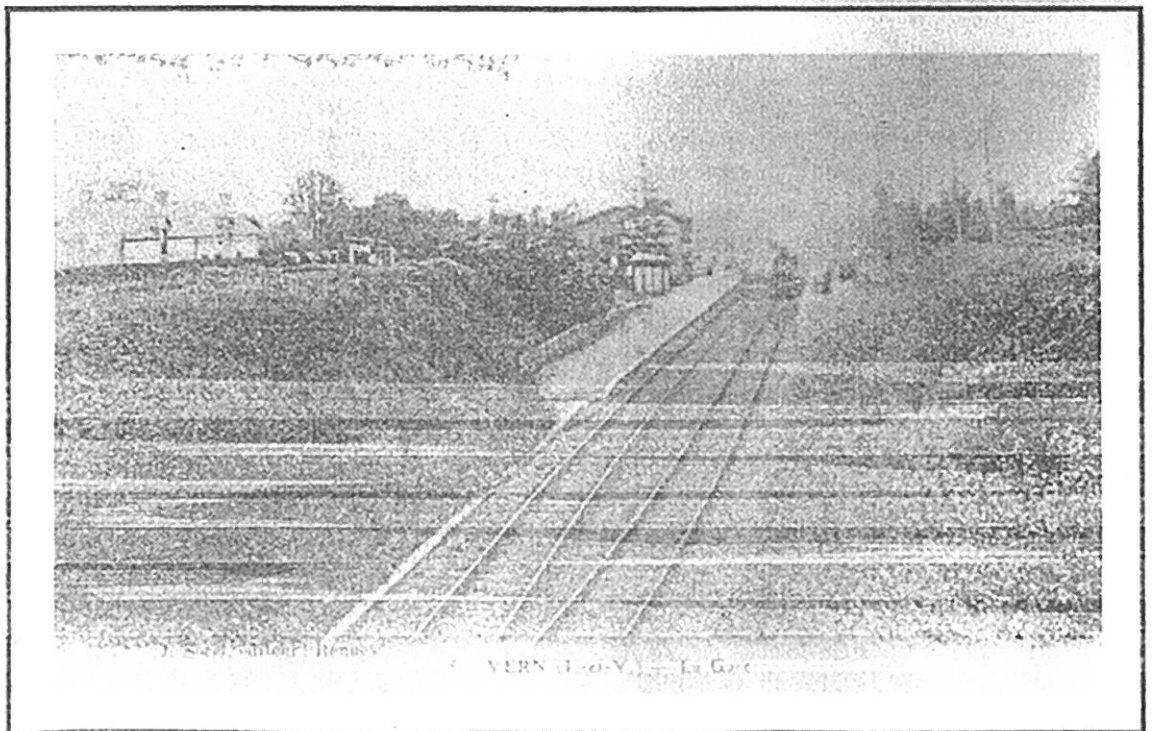
1079. Vern (Est-N) - Panorama de la Gare, dans le Jardin le Clocher de l'Eglise de Livrens







Le chemin



YERN (I.-o.-Y.) - La G. C.